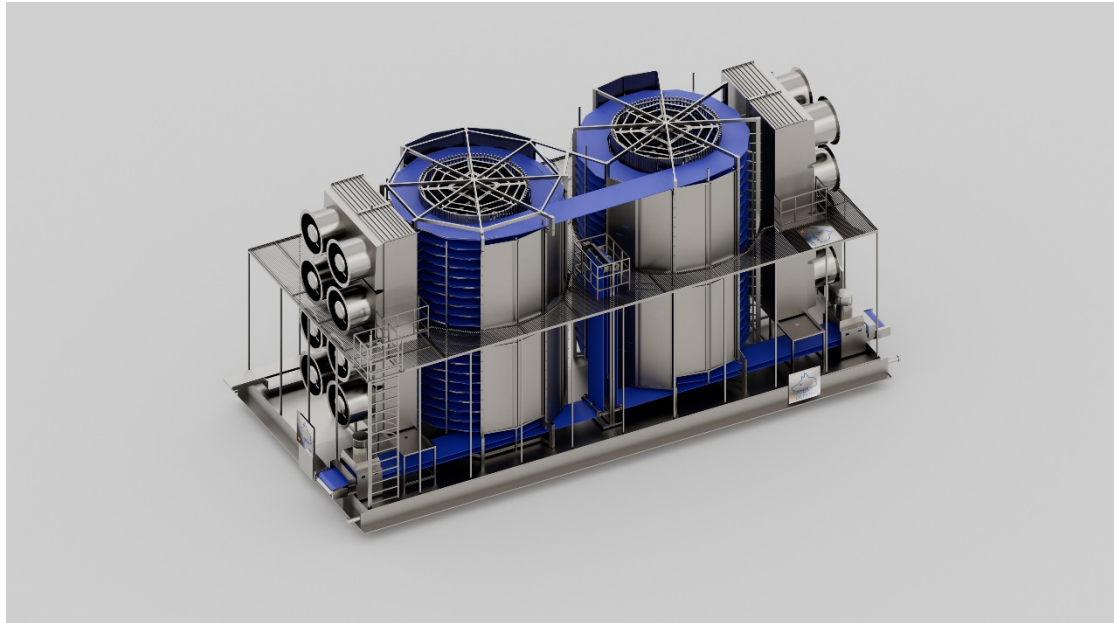


产品名称：

Low tension spiral freezer

产品主图（多维度展现）：







产品详情总叙述（可以从产品的主要特点入手编写）：

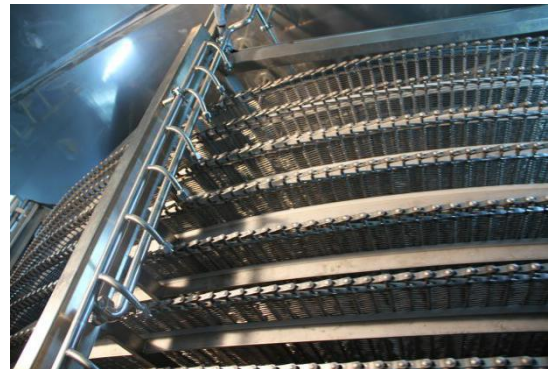
产品型号细节展示：

产品详情细节展示：

Structure features

A. Open freezer design and structure

- Open freezer design with stainless steel structure, hygiene product zone.



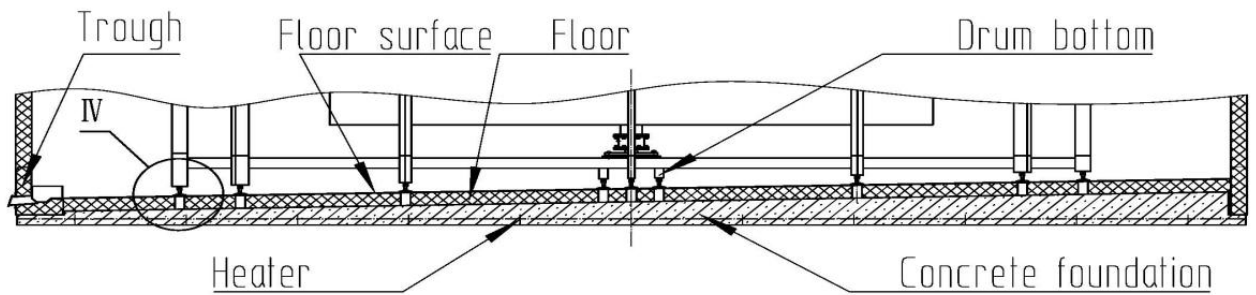
- Structural support built with fully-welded stainless steel, prevents oil, dirt etc. from remaining on the surface.
- Stands fully-welded to floor, less death pot of hygiene.

B. Enclosure and floor

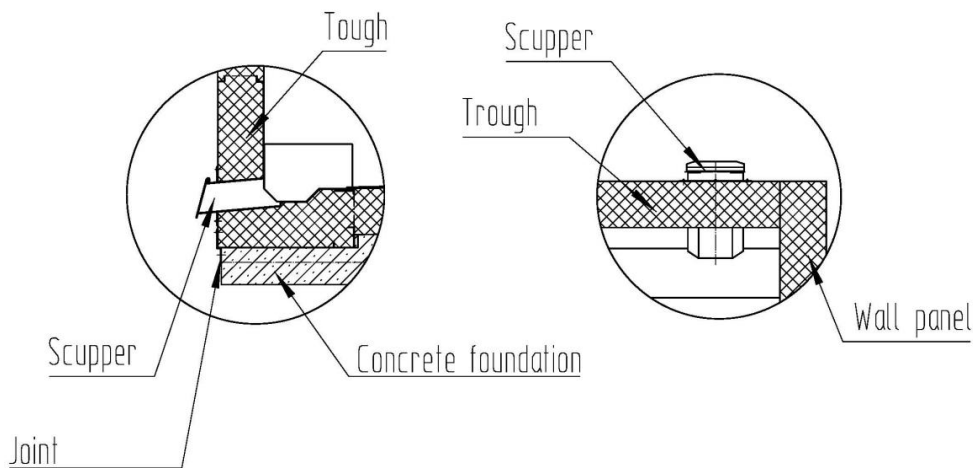
- Seamless assembled enclosure, with good insulation feature and guarantees

hygiene.

- Stainless steel skinned sandwich panel, high density PU foamed (42kg/m^3). Panel thickness 150mm suitable for freezer insulation.
- PU sandwich panel processed by Italian PU foaming line and US stainless steel sheet forming line. High quality ensured.
- Concrete floor with ramps design with effective drainage, ensures faster cleaning, less down time and food hygiene.



- Concrete foundation with electrical heating.
- Water trough set at one side of insulated floor, slope height 190mm. Drain scuppers fully welded.



C. Evaporator



- Efficient evaporator design with high heat transfer rate, provides greater freezing capacity while saves valuable factory footprint space.
- Optimized high air pressure axial fans and motors give a maxim production capacity with the lowest energy consumption. Optimized air velocity though evaporator.

D. Drive

- Advanced synchronous control technology applied. Chain size approximate to cage diameter drives the system. Lower tension for chain and ensures a steady and reliable driving.
- Rich experience in manufacturing rigid drive cage ensures a reliable installation and operation of the system. Drive shaft of cage is composed by three sections from top to bottom for easier maintenance.
- Floor access to reducer, motor and chain.
- Completely sealed with stainless steel housing, against harsh environment for better hygiene, while easy to service or clean.
- Reliable plastic belt conveyor.
- Food grade lubricant used, prevent food and equipment from pollution.

E. Smart and reliable control

- Leasing control element from Schneider etc. Guarantee quality and precise of control.
- Imported stainless steel switch box and other electrical elements meet NEMA-4 (IP55) international standard.
- Auto heater equipped inside switch box, prevents elements from moisture and frost extends service life.
- PLC with operator interface: touch screen data recording and remote control options.
- Complete alarm system including limit switch, approach switch and door magnetic switch etc., guarantee the safety of operator and equipment.

F. Air flow

- Horizontal air flow: Ensures higher density of products, more efficient heat transfer while lower energy consumption.
- Annular air flow duct: Best air flow and guarantees even product temperature.
- Balanced air pressure inside structure, less cold loss at outfeed end.
- The system cleans the internal structure completely with water and disinfectants to meet the hygiene requirement of food processing.
- System components

产品优势展示:

产品应用范围展示:

产品如何使用:

关于产品的其他信息等想要展示的关于产品的内容: